

Csg

Custom
Solutions
Group

Custom Solutions Group LLC
 1419 Avenue A, Katy, TX 77493
 Office: 281.574.9999
 E-Mail: sales@csg-labs.com



Agilent Technologies

Channel Partner

Description:

The system features the analysis of FAME via EN 14103, "Fat and oil derivatives Fatty Acid Methyl Esters (FAME)-Determination of ester and linolenic acid methyl ester contents."

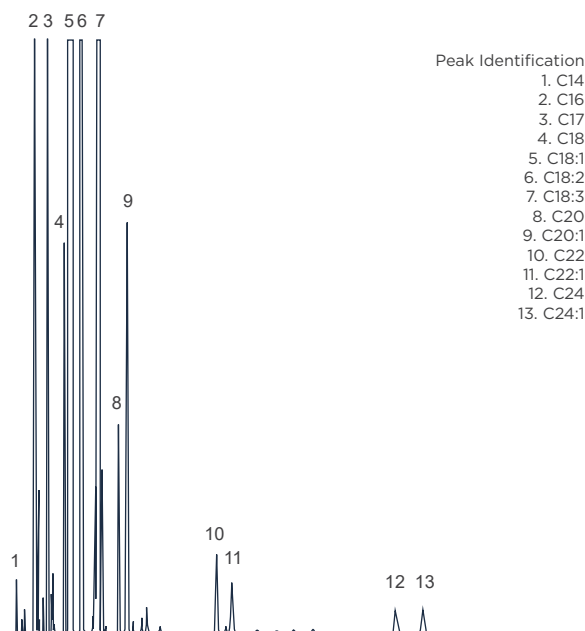


Figure 1, Chromatogram for EN 14103

Features and Benefits

- Verification that the ester content of FAME is greater than 90 percent and that the linolenic acid content is between 1 percent and 15 percent
- Suitable for FAME's with methyl esters between C14 and C24
- Split/Splitless injection to single column and analysis via FID
- Decades of experience

